



**Ealing  
Fields**

Brave Hearts  
Bold Minds

Mark Bedford

*Associate Headteacher*

*Ealing Fields High School*



Twyford  
C of E  
Academies Trust



Twyford  
C of E  
High School



William Perkin  
C of E  
High School



Ealing  
Fields

Brave Hearts  
Bold Minds



Ada Lovelace  
C of E  
High School

# The Twyford Trust 10:10 Ethic





- A comprehensive school, which stretches and challenges students to achieve to the highest level.
- Highly academic curriculum – focus on English, Maths, Science, Languages and Humanities.
- Curriculum model shared across Twyford Trust schools will ensure students are supported to the same standards of academic achievement.
- Longer afternoon lessons to develop creativity and curiosity.



- Ealing Fields encourages the spirit of courageous endeavour, which supports effective learning and strong habits of leadership in its learners.
- Ealing Fields will continue its development as a modern, diverse and inclusive organisation within a broadly Christian framework.
- Highly disciplined – responsible behaviour and supported to develop positive disciplines as learners - 10:10 ethic



We are focused at all times

We care about the quality of the work in our book

We say "Thank You" at the end of every lesson

We come fully equipped

We complete prep for every lesson, every day

We are reflective about our learning





Aspirational  
Energetic  
Creative  
Fun-loving



Calm  
Reflective  
Explorative  
Disciplined





Harvest 2017 for Ealing Foodbank



Ball Crew at Westfield with Tennis Stars



Christmas Concert 2017



Perceval Enterprise Day February 2018



World Book Day March 2018



Winter Sports Day





## Permanent site – Place House

- Opportunity to involve students in process
- Class representatives
- Architect's workshop

## Permanent site – Place House

- 2 years in temporary accommodation – Wyke Gardens but can achieve all this
- 2 more in temporary accommodation to come
- High hopes indeed for school in new building
- Emphasis on community and performance so communal and performance spaces are of importance
- Extracurricular and community involvement a priority
- Maximise use of the site for sport



# Place House

*Ealing Fields High School Permanent Site*

*Tim Spencer, DPP*



# Bowmer & Kirkland

## EALING FIELDS RESIDENTS ASSOCIATION UPDATE

23<sup>rd</sup> May 2018



## EALING FIELDS HIGH SCHOOL, LITTLE EALING LANE, LONDON



Education & Skills  
Funding Agency











- In comparison with early Ealing Council designs:
  - Pulls building away from residential boundaries more
  - Reduces amount of frontage facing neighbouring properties
- Respond to Folly and sympathetically links to Place House
- Frames the carriage turning circle
- Larger external play areas and creation of distinct external spaces

- **Pre-application Meetings and Design Input**
  - Pre-application Meeting 1 7<sup>th</sup> December 2017
  - Pre-application Meeting 2 20<sup>th</sup> December 2017
  - Pre-application Heritage Meeting 3 10<sup>th</sup> January 2017 Feedback
  - As submitted to Education and Skills Funding Agency for Funding Approval
- **Public Consultation 28 March 2018**
- **Pre-application Meeting 4 17<sup>th</sup> April 2018**
  - Potential Changes following Pre-application Meeting 4 17<sup>th</sup> April 2018:
    - Site Masterplan
    - Floor plan & Entrance position
    - Elevations
    - Servicing



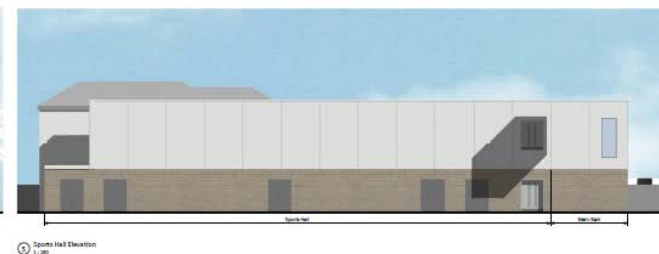
#### Planning Feedback

- Massing of the South block in front of Place House a concern
- Improve North and South block facade window arrangement and alignment
- Increase brick to North and South block facade



# Design Progression

## Initial Proposals - Pre-application Meeting 1 (November 2017) Elevations





#### Requested Changes to the Design by Ealing Council

- The massing of the South block in front of Place House still a concern to Ealing Council – a section of second floor requested to be pulled back in line with Place House
- Ealing Council requested improvements to quality of elevations with more brick to North and South block façade
- Ealing Council requested more emphasis to the main entrance



Design as presented by the Contractor Team at pre-application meeting with Paul Ricketts, Laurence Field and Francis Torto, 7<sup>th</sup> December 2017

# Design Progression

## Amended Elevations submitted at Pre-application Meeting 2 (December 2017)







#### Design Response from Second Pre-Application Meeting

- A section of second floor pulled back in line with Place House
- Additional brick to sports block and main hall facade
- Window arrangement consolidated
- Reuse of Gate House
- Low category trees removed from Southern boundary

#### Planning Feedback

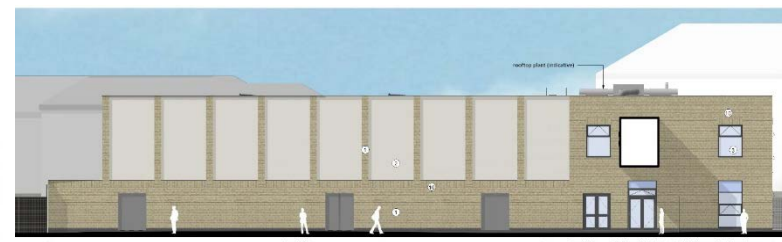
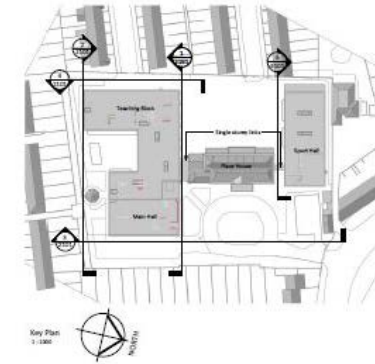
- Place House to remain the focal point
- Clearly delineated pedestrian access to the new entrance
- Retained trees to be crown lifted – improve visibility
- Visual link from the reception to the Folly to be explored
- Render treatment to front of sports block facade to be reviewed



Design as presented by the Contractor Team at pre-application meeting with Paul Ricketts and Rosemarie Wakelin, 20<sup>th</sup> December 2017

# Design Progression

## Elevations submitted to Education and Skills Funding Agency for Funding Approval





**Key Information and Design Changes at funding approval stage**

- Outline Demolition Rational issued to Historic England 24th January 2018. Response received 8th February 2018 accepting the principle.
- Car parking around turning circle removed.
- Pedestrian path to new entrance provided. Surface materials amended.
- Pedestrian gate lined up with link façade.
- Brick piers added to the courtyard facade of the North and South block.
- Feature brick detailing added to identify entrances.
- Amount of brick increased over main entrance link.
- Detailed drawings of actions to retained listed buildings to be provided with the application.



## Public Consultation Event and Feedback

---

- Held on 28 March 2018 at St Stephens House, Ealing.
- 2000 event flyers issued to neighbours, 1000 event flyers issued by the school, and 75 event flyers distributed to the Northfield Ward meeting.
- Staffed by DPP Planning, Stride Treglown, Aecom, Ares, Bowmer & Kirkland, Curtins, Ealing Fields and the ESFA.
- Attended throughout by the Ealing Fields Resident's Association.
- The consultation event was well attended by 138 people. A total of 56 feedback forms were received, 37 at the consultation event, 18 via email and 1 via post. 37 forms indicated support for the proposal, 13 objected to the proposal, and 6 did not indicate support or an objection, or were unsure.

Some comments in support of the proposals included:

- Fantastic to see the site being restored for educational purposes;
- Great benefit to the community and much needed for the children in South Ealing and surrounding areas;
- A much needed scheme for the growing number of families in the area as there are currently not enough school places to meet demand;
- The plans maximise the space and will create a new and pleasant environment for students;
- Once built, the school will become a huge asset and a centre for the community;

Concerns raised regarding the proposals included:

- The implications of an emergency exit on Hollies Road;
- The proximity of the building to neighbouring properties;
- Impacts on sunlight and daylight to adjacent properties;
- Delivery access via Convent Gardens;
- Ecological implications for existing habitats and species.

All comments will be taken into account and addressed within a detailed Statement of Community Involvement that will be submitted with the planning application.

#### Heritage

- A Heritage survey of Place House and the Service Extension and a Gazetteer of the 18th and 19th Century heritage assets to be provided with the application.
- Detailed drawings of actions to retained listed buildings will be provided with the application.
- Intention is a light touch refurbishment to retained listed buildings.

#### Landscaping

- Place House to remain the focal point when entering the site. A clearly delineated pedestrian access to the new entrance to be provided and the car park lining around the carriage turning circle to be removed to declutter the area.
- The gate between Place House and the North (sports) block to line up with the façade of the link.

#### Elevations

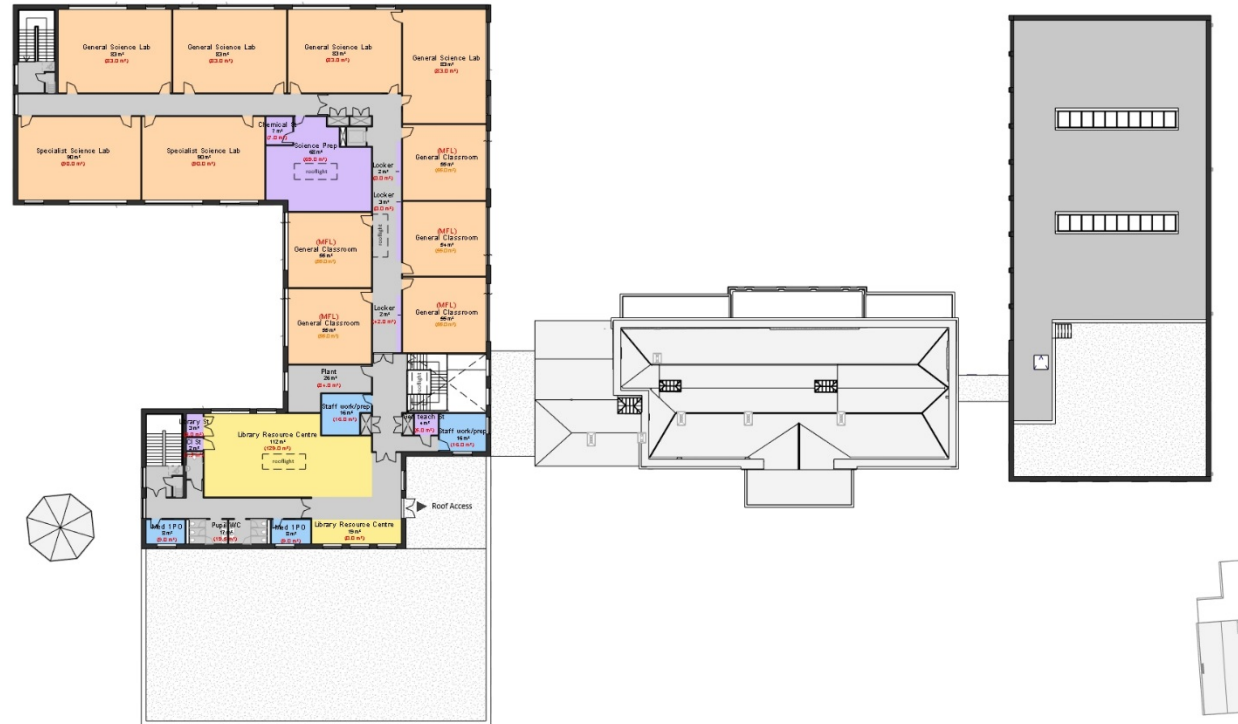
- Further vertical elevational articulation to be added to the North block.
- The link between Place House and the North block to be more sympathetic of Place House, preferably glazed.
- Rooftop plant to be repositioned to minimise impact and screened as appropriate.

#### Highways

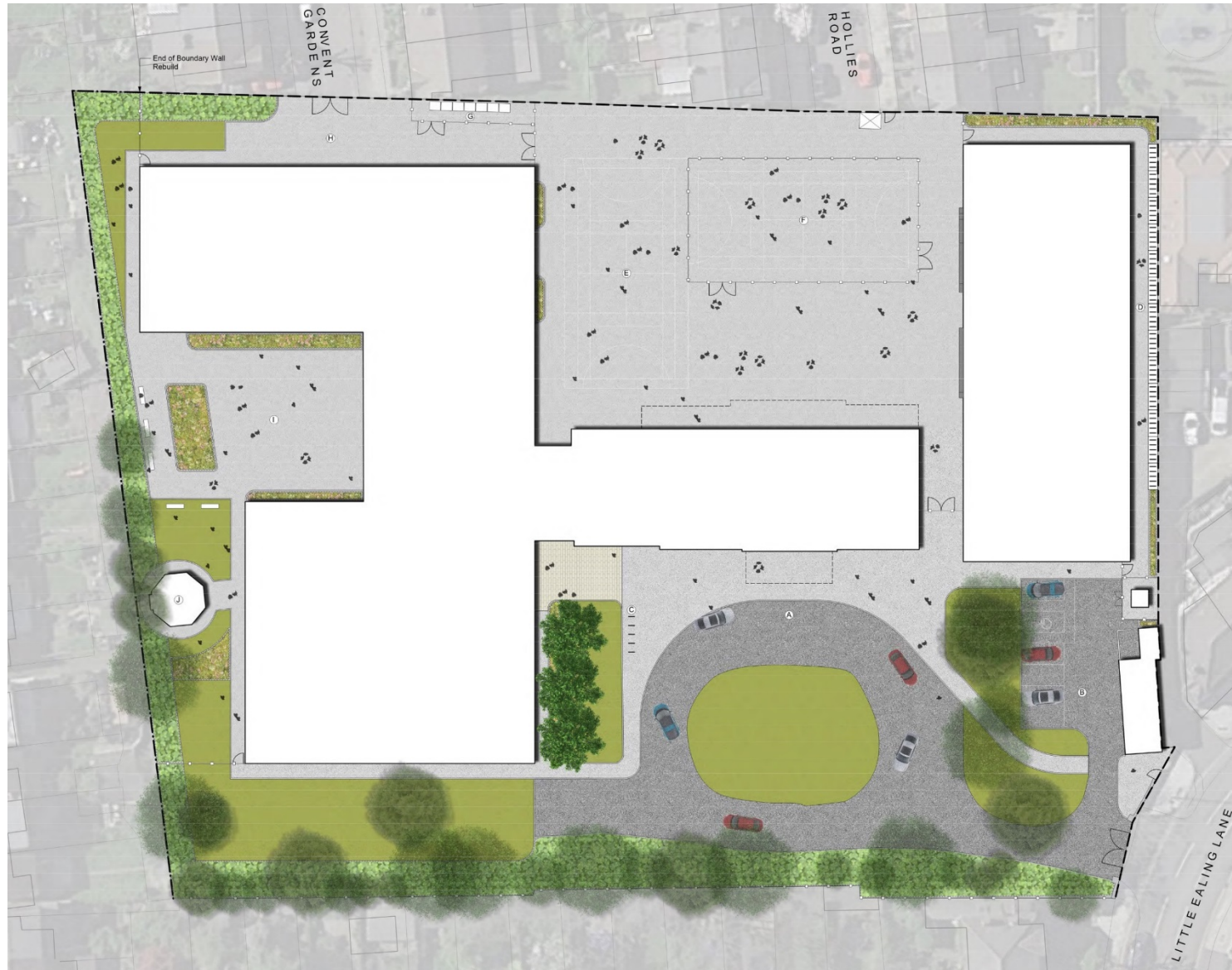
- Emergency exit gate has been removed from Hollies Road.
- Refuse removal moved from Convent Gardens to Little Ealing Lane.
- Entrance gate to be setback from Little Ealing Lane to allow car to pull in off the road.
- Pedestrian entrance gate to be widened to ease pedestrian congestion.

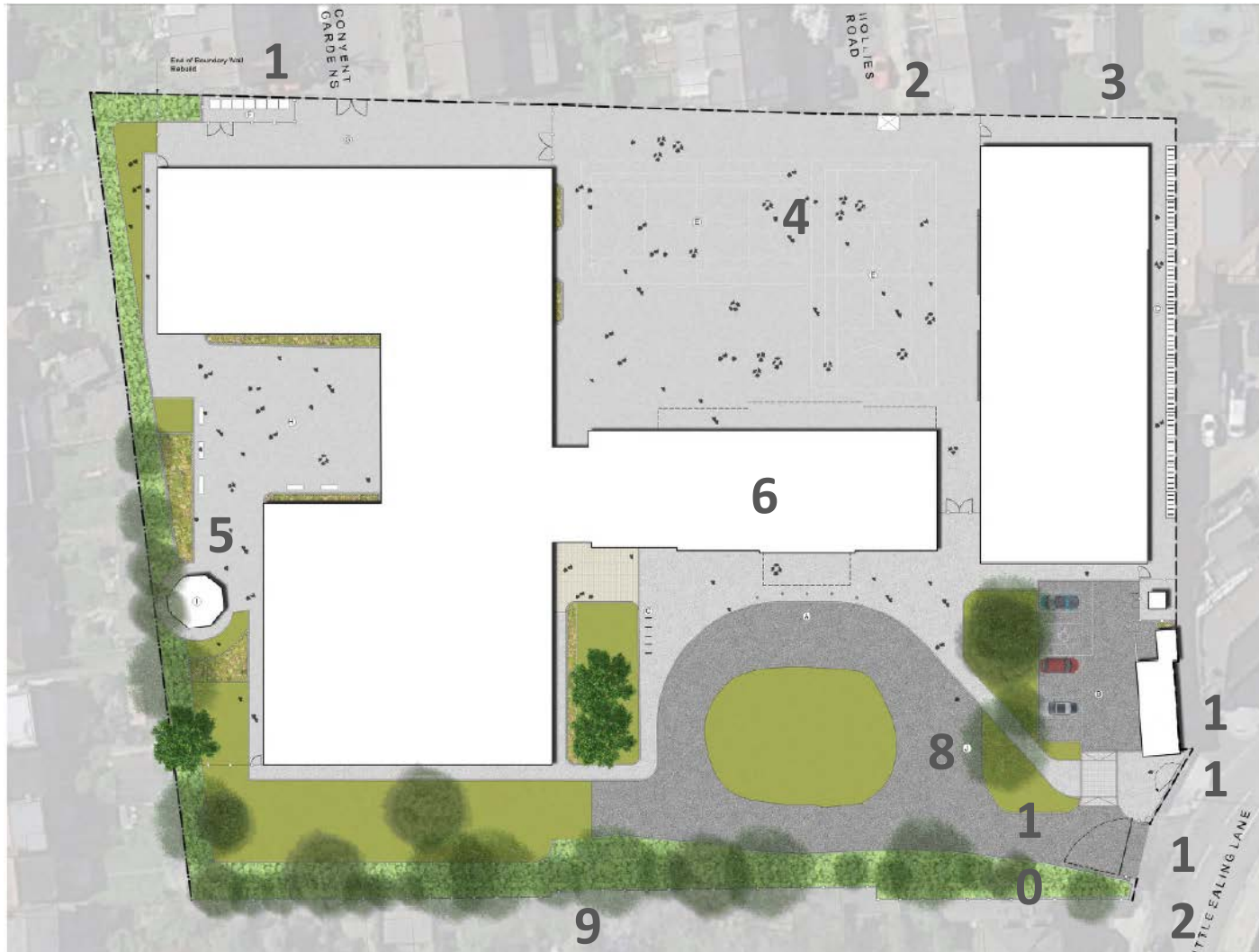












1. Refuse area relocated
2. Pedestrian emergency exit gate removed
3. Planting to rear of North block removed
4. MUGA fencing removed
5. Landscaping reconfigured to enhance connection with folly
6. Light touch refurbishment to retained listed buildings
7. Pedestrian route and priority improved
8. Dead / dying trees and low category trees to be removed
9. Weld mesh fence to East boundary to be anti-climb.
10. Main vehicle entrance gate setback
11. Pedestrian gate widened
12. Fire tender and local authority refuse collection vehicles via Little Ealing Lane only



## Response To Feedback

### Currently Proposed Elevations following feedback from Pre-application Meeting 4 (April 2018)



























**Ealing  
Fields**

Brave Hearts  
Bold Minds